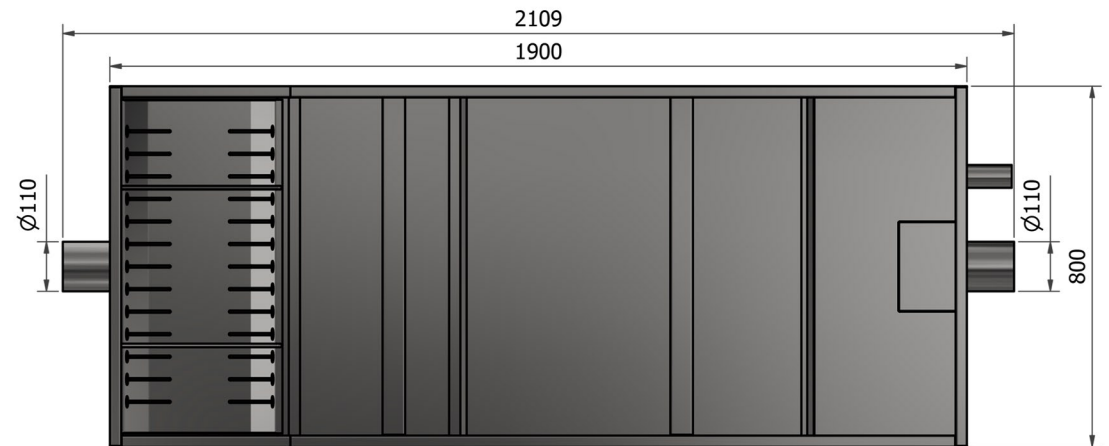
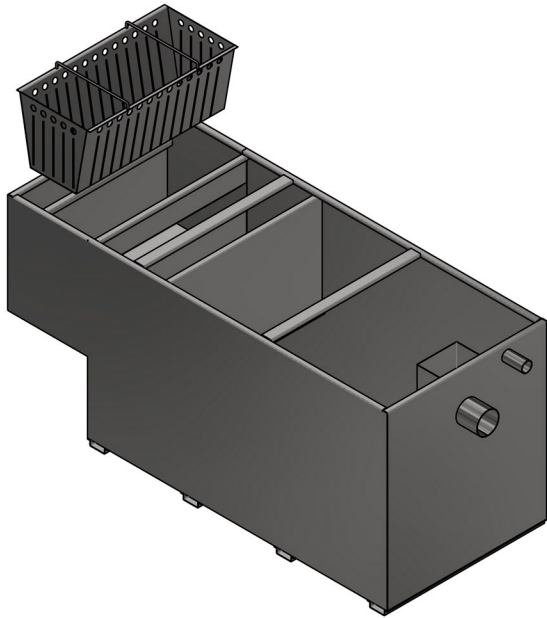


# GCT-2G 4L/s/UG



## GCT-2G 4L/s/UG Underground Grease (Fat) Trap

### Features

- Manufactured from 304 stainless steel (316 on special order)
- Smooth surfaces to prevent bacteria build up and promote ease of cleaning
- Separated sludge trap & grease trap
- Slotted basket strainer for easy removal of solids
- Fully accessible outlet pipe for rodding
- Compatible with standard plumbing fittings
- Chamber vent pipe to prevent airlocking
- Suitable for below ground installations
- 2mm (14 gauge) tank
- SANS 10252-2 compliant

**Flow Rate:** 4L/sec

**Max Grease Capacity:** ≈ 160KG

**Net Weight:** 135KG

### General Applications:

Hotels, hospitals, food processing plants, commercial & industrial kitchens etc

**\*NO LIDS\* To be used in conjunction with the GCT-2G 4M cover**

